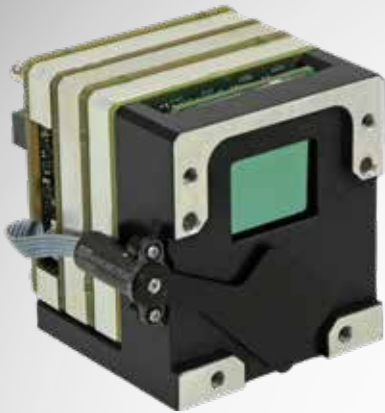


Eye R Core XGA



HIGH RESOLUTION THERMAL IMAGING SYSTEM



Opgal's high resolution **Eye R Core XGA** thermal imaging system provides unparalleled image quality performance with a 1024x768 resolution, and a short time-to-image. With its small adjustable dimensions, and optional compatible lens, this advance core is highly versatile and modular. Supporting fixed lenses, dual FOV lenses, and motorized focus, the XGA can come as an Open Frame Camera (OFC) for OEM thermal imaging solutions, or it can be easily integrated into any system.

The core's exceptionally high frame rate captures split-second events (like shooting bullets), making it the perfect choice for threat detection and automatic aim for retaliation. Its uniquely sensitive sensor technology compensates for this rapid 120 Hz frequency, resulting in a clear image of highspeed incidents.

KEY BENEFITS

SMALL BUT POWERFUL

Intelligent defense requires a comprehensive coverage strategy, utilizing high performance, all weather, compact thermal imaging solutions. The Eye R Core XGA is compact and adaptable. It can be integrated into complex systems with ease, without compromising image quality. It is the perfect choice for long-distance applications, providing a wide FOV and a crisp image of an often dynamic and rampant scene.

KEY FEATURES

- High 1024x768 resolution
- High sensitivity of <50mK
- Small size gives it a low profile
- Accurate image analysis
- High speed target recognition
- High frame rate of 120 frames/sec
- Optional new shutterless technology
- High quality real-time image processing
- Adaptive design to meet customers needs



APPLICATIONS



Weapon sights



Situational awareness (up to 360°)



Long-range surveillance & observation



Missile defense systems

Eye R Core XGA	
Resolution	1024x768
FPA Pitch	17µm
FPA Material	ASi
NETD (F#1, 25°C)	<50mK
Digital Video Output	Camera Link Medium
Frame Rate	30/60/120Hz (Digital)
Latency (for NUC+BPR)	~2 video lines
Time to Image	<10 secs
TEC-Less Operation	Yes
Shutter	Shutterless (Optional Shutter)
Control Interface	RS232 serial communication
Operating Temperature	-40°C to +70°C
Storage Temperature Range	-40°C to +85°C
The following parameters are for the engine only (without the lens)	
Power Consumption	<9W @120Hz
Dimensions (in mm)	56(H) x 59(W) x 62(L)
Weight	<300g
Standard	Mil-STD-810G