

DUAL FOV UNCOOLED CAMERA FOR SECURITY APPLICATIONS

Delivering an innovative solution for long range observation, Sii MLO thermal camera is equipped with a dual field of view lens providing wide (14.3°) and narrow (4.6°) field of view.

The Sii MLO is a thermal camera with a high sensitivity uncooled microblometer available in both 384 X 288 and 640 X 480 formats, which makes it suitable for city-wide surveillance and public safety applications. It enables the detection of man size target in total darkness and through dust and smoke.



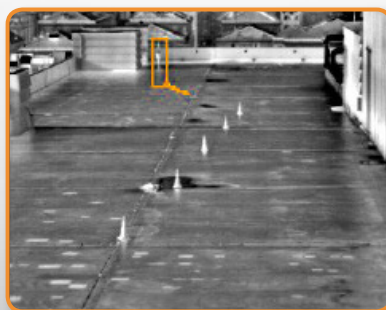
Sii MLO is designed to withstand the harshest weather and environmental conditions, including rain, direct sunlight, high humidity and dust. It is used in a variety of security applications such as observation and detection.

KEY BENEFITS

- Two fields of view providing either wide or detailed image
- On demand auto-focus
- Outdoor design – water, sand and dust sealed
- Supports VMD software
- Remote controlled
- Input voltage protection using internal ESP card
- Control via Pelco D commands
- TCP/IP card (Optional)

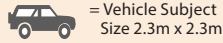
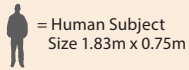
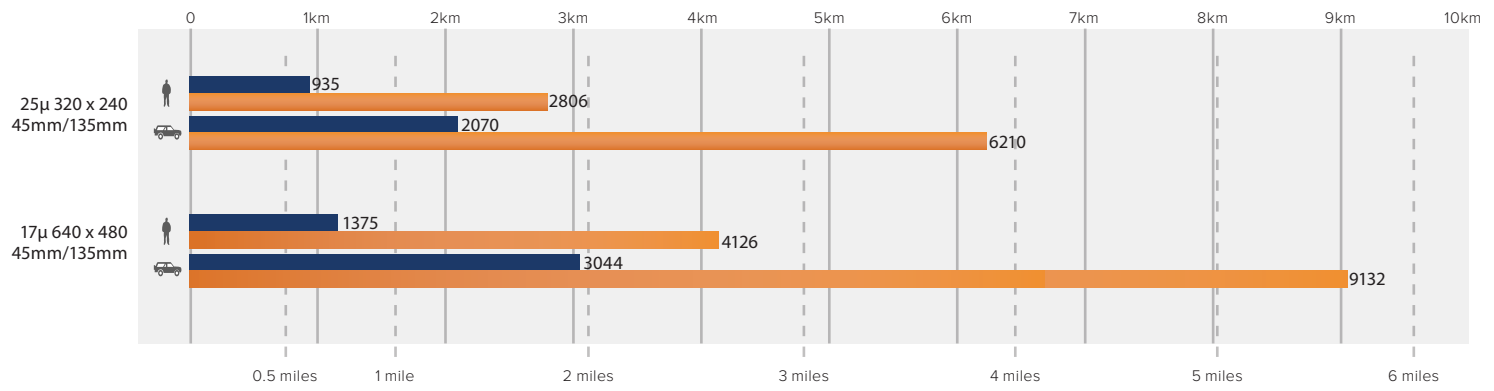
APPLICATIONS

- Ground Applications
- Fish Farm Protection
- Safe City



Vumii Sii MLO Range Performance

*Performance Dependent on Atmospheric Conditions



Detection
Recognition

Detection: 1.5 pixels across critical dimension
Recognition: 6 pixels across critical dimension
Critical Dimension: 0.75m (human); 2.3m (vehicle)

Sii MLO Specifications

Features	Description		
Spectral Range	7.5-14µ		
Number of Pixels	384 x 288	640 x 480	640 x 480
Analog Video Output	CCIR or RS-170), 1.0V p-p, 75ohm		
Frame Rate	25/30 Hz or 50/60Hz		
Pixel Size	25µ	25µ	17µ
Remote Control	RS232 or RS-422 / TCP/IP (Optional)		
Control Operation	Video Polarity, NUC, zoom		
Communications	Pelco-D		
Operating Voltage	12VDC or 18-32VDC - using protection card ESP		
Power Consumption	3.2 w	4.3 w (basic unit)	3.5w
NETD	50mK @ WFOV	50mK @ WFOV	65mK @ WFOV
Environmental Qualification	IP 65		
Operating Temperature	-40° to +140° F (-40° to +60° C)		
Dimensions (without lens) (H x W x L)	240 mm x 100 mm x 110 mm 265 mm x 100 mm x 110 mm with protection card		
Weight	< 2.4kg		

* Some countries may be subject to thermal camera export licensing requirements

All specifications are subject to change without notice. All rights reserved.