

Sii XRU



LONG RANGE CONTINUOUS ZOOM THERMAL CAMERA



Vumii's Sii XRU is a long range, continuous zoom, uncooled thermal camera. Proprietary image processing and autofocus capabilities provide industry leading thermal image quality. Sii XRU combines an advanced high resolution uncooled 17μ 640x480 thermal core with a unique 25-225mm continuous zoom lens for long range performance. The uncooled thermal core offers extreme long-range detection and assessment without requiring regular maintenance, ensuring a lower cost of ownership. Sii XRU is available as a stand alone thermal camera package that is easy to integrate with other systems, or as part of the Accuracii family of pan/tilt systems. The rugged components are also designed to meet stringent naval and industrial specifications.

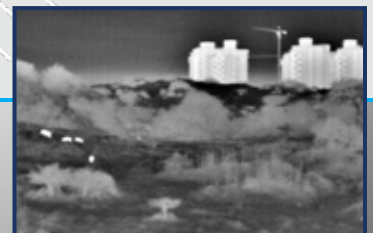
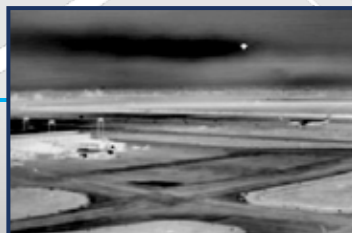
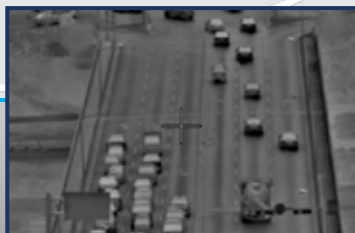
FEATURES

KEY BENEFITS

- **Long Range Optics**
This uncooled thermal camera provides Johnson's Criteria Detection beyond 15km.
- **Continuous Zoom Lens**
A 25-225mm thermal lens provides maximum situational awareness, and 24/7 threat assessment.
- **Advanced Imaging**
Vumii's proprietary image processing algorithms provide industry leading thermal image quality.
- **Rugged Design**
The Sii XRU's rugged design is certified to IP66, and is protected against hot, cold, dusty, and other harsh or industrial environments.

AVAILABLE CONFIGURATIONS

- **Thermal Imager & Optics**
Uncooled 17μ 640x480
- **Continuous Zoom Optics**
25-225mm
- **Video Output**
NTSC or PAL
- **Additional Options**
TCP/IP or Analog



APPLICATIONS

- Port Security
- Border Surveillance
- Airport Security
- City Safety
- Solar Farms
- Critical Infrastructure



Sii XRU Camera Performance



= Human Subject
Size 1.8m x 0.6m

Recognition 6 lines on subject
Detection 2 lines on subject

* Performance dependent on atmospheric conditions

Features	Thermal Channel
Imager Type	Uncooled 17μ microbolometer 8-14μ
Resolution	640x480
Sensitivity	NETD: <50°mK
Video Output	RS-170 (30Hz) / CCIR (25Hz)
Imager Features	Autofocus on demand, polarity, NUC, image flip, manual gain level, optical & digital zoom.
Continuous Zoom Lens	25 - 225mm: 24.5° - 2.8° HFOV
Features	System Specifications
Unit Weight	9.97kg
Dimensions (L)x(H)x(W)	400mm x 250mm x 235mm
Environmental Rating	IP66
Certifications	CE, FCC
Power Input	12-32VDC
Operating Temperature	-40°C to +60°C (-40°F to +140°F)
Communication Protocol	Pelco D, ONVIF Profile S
Control Connection	Serial RS422/RS485, TCP/IP